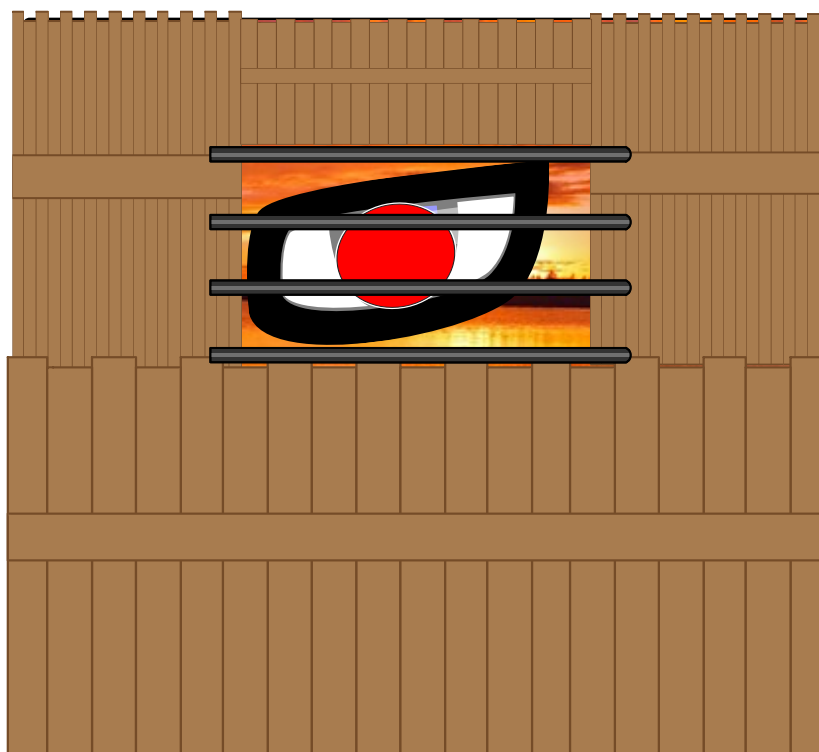


Shot:close up  
Angle: level angle  
Camera Movement:zoom



Scene Description:An eyeball, big, yellowish, distinctly inhuman, stares raptly between wooden slats , part of a large crate. The eye darts from side to side , very alert.

Shot:Point of view  
Angle:Level  
Camera Movement:Zoom



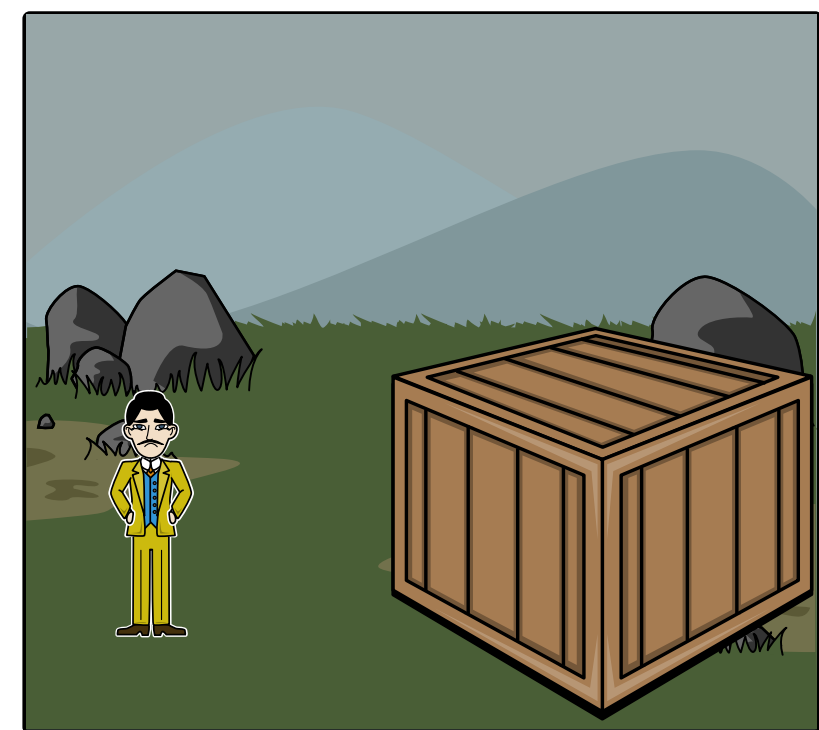
Scene Description: It's quiet for a second. A ROAR rises up from the jungle, deafening. The trees shake as something very, very large plows ahead through them, right at us. Every head gathered and stared into mysterious bushes as they hear the loud sound as it bursts through the trees.

Shot:widescreen  
Angle:Level  
Camera Movement:Pan



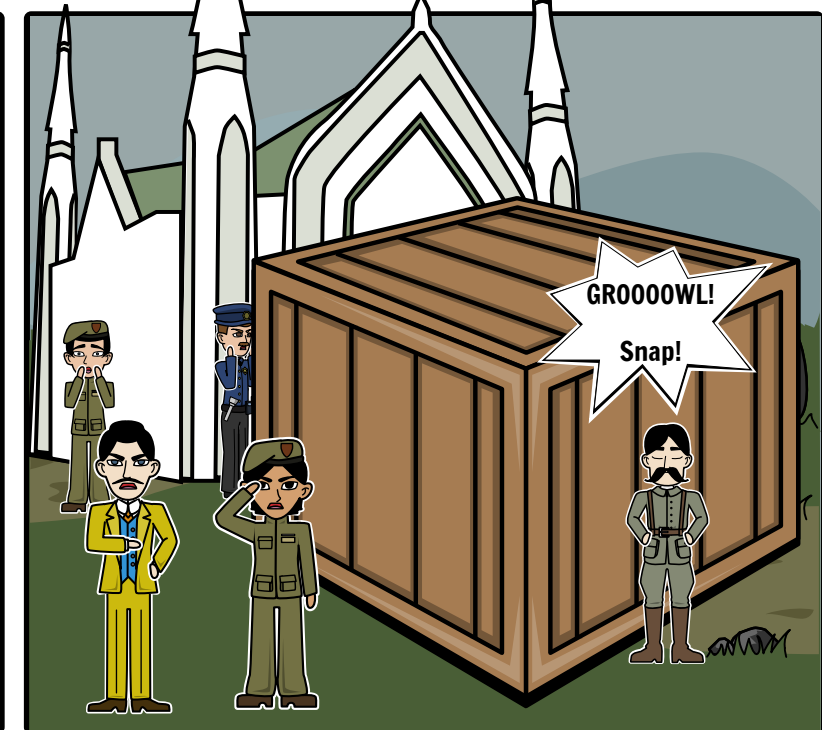
Scene Description: It drops and pushes forward into the back of the crate, showing it across the jungle floor towards an impressive fenced structure that towers over an enclosed section of thick jungle. There's a guard tower at one end of this holding open that makes it look like San Quentin prison!

Shot:widescreen  
Angle:level  
Camera Movement:Tilt



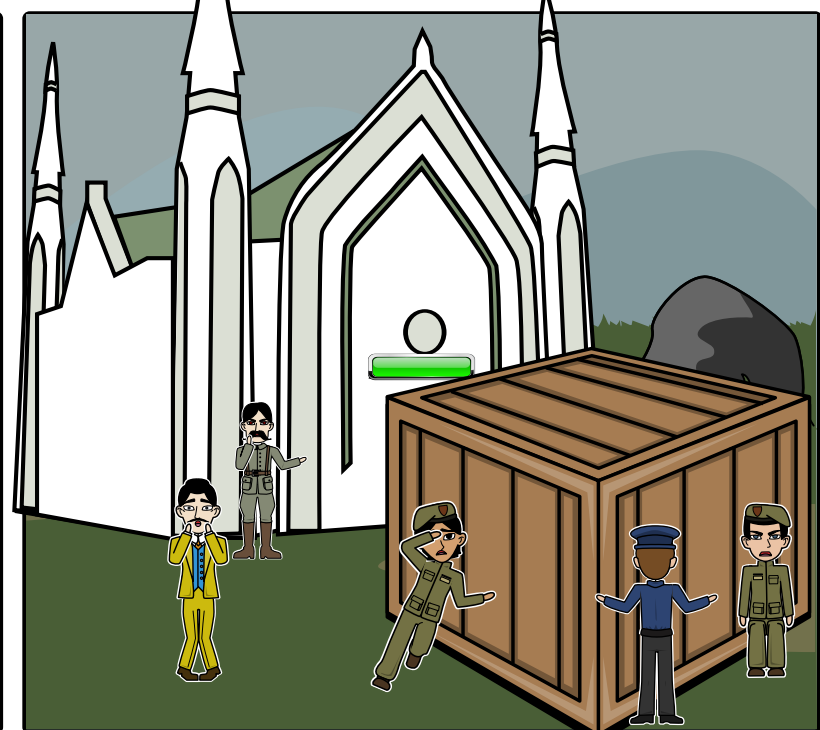
Scene Description:The crate lands to the floor. Then there was a grimmed faced guy seems to be in charge.

Shot:Widescreen  
Angle:Level  
Camera Movement:Tilt



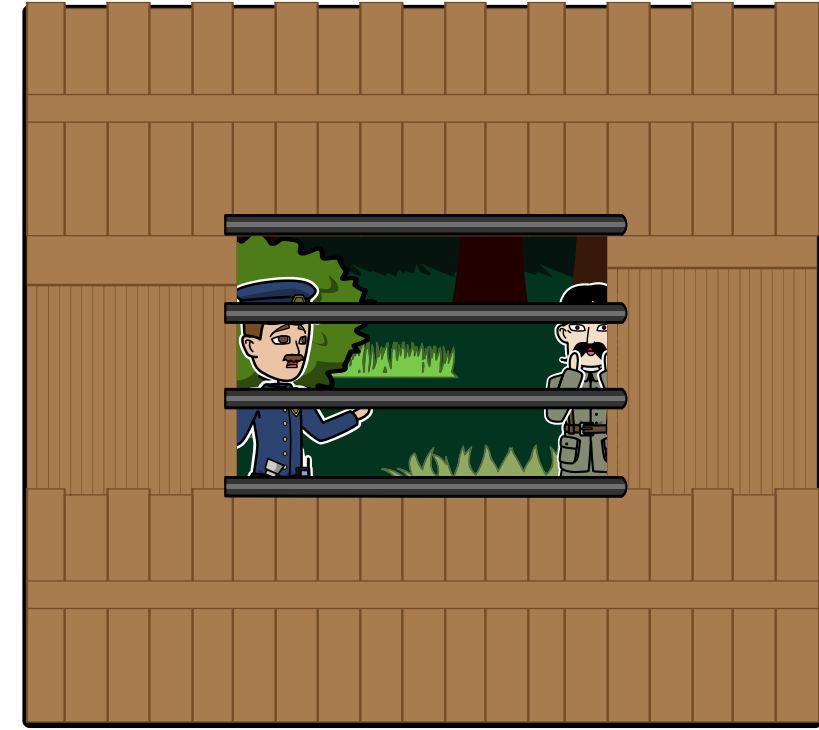
Scene Description:The pushers were gonna push the crate but growls and snaps came frm inside. Then the leader said to get back in there.

Shot:widescreen  
Angle:Level  
Camera Movement:Tilt



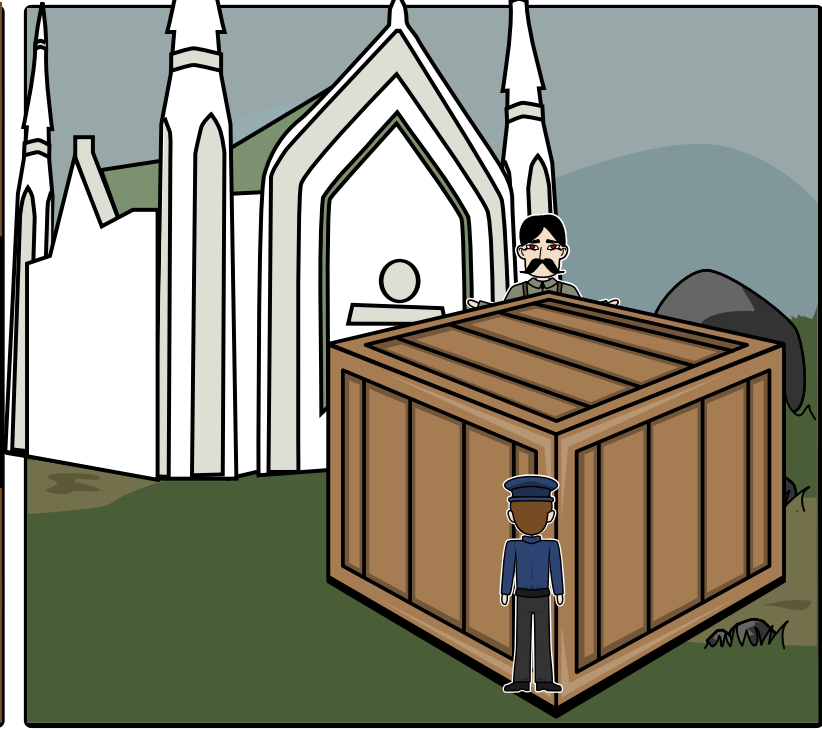
Scene Description: The workers push the crate and the green light shows up so there was contact.

Shot:Point of view  
Angle: Level  
Camera Movement: Tilt



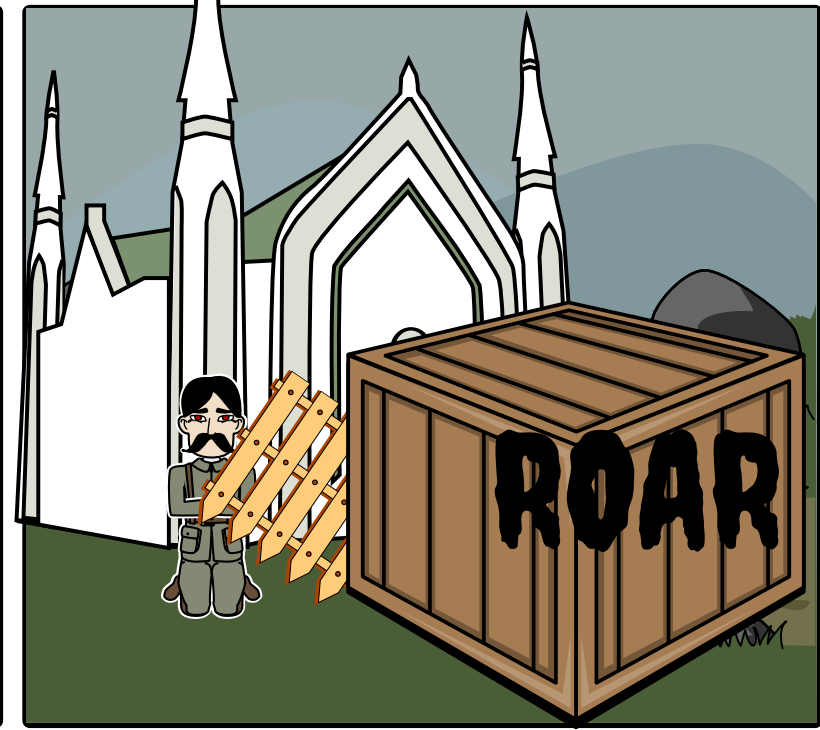
Scene Description: From inside of the crate the creature gets a glimpse of what outside like jungle foliage.

Shot:widescreen  
Angle:Level  
Camera Movement:Tilt



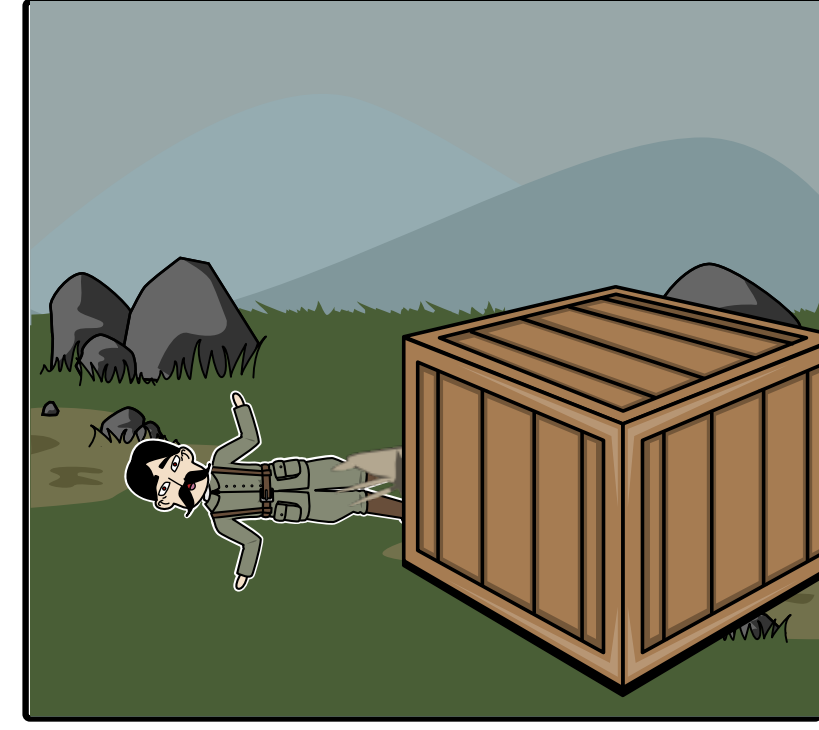
Scene Description: A worker climbs the crate with a rifleman ready at the scene.

Shot:Widescreen  
Angle:Level  
Camera Movement:Tilt



Scene Description:A worker gets ready to open the crate but than a roar knocks him off with the gate.

Shot:Close up  
Angle: Level  
Camera Movement:Zoom



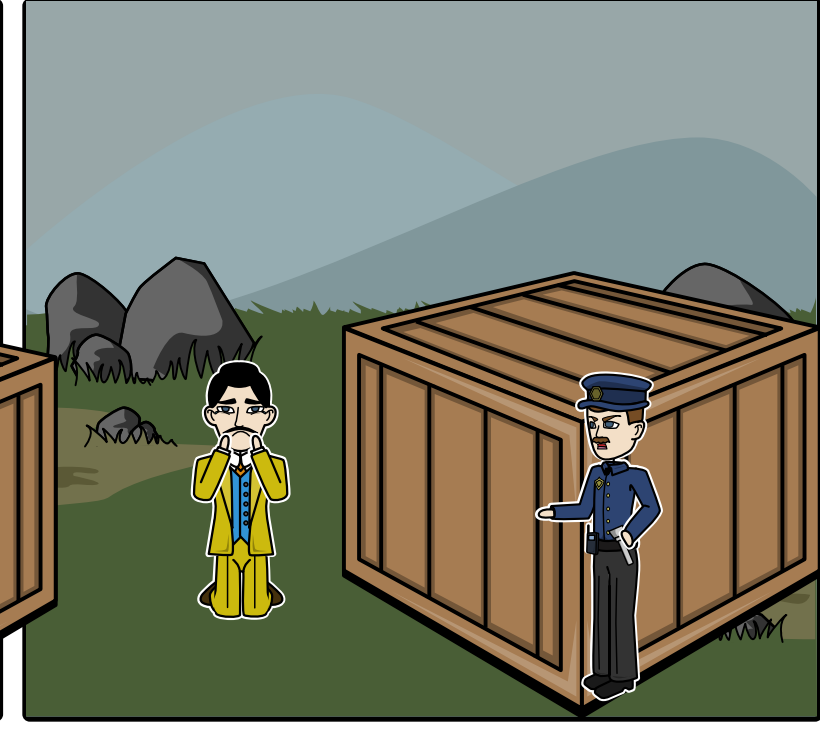
Scene Description:The worker is grabbed by the claws of the beast.

Shot:Widescreen  
Angle:Level  
Camera Movement:Tilt



Scene Description: The Man in charge shouts orders. Tasers get in there! Shoot her!! Shoot her!!

Shot:Widescreen  
Angle:level  
Camera Movement:Tilt



Scene Description:The WORKER is gone.